

ENABLING PEOPLE SAFETY IN TRAVEL RECOMMENDATION

J.Sridhar¹, M.Sriram²

¹Asst. Professor, Dept. of Computer Science & Engg
BIST, BIHER, Bharath University, Chennai

²Asst. Professor, Dept. of Computer Science & Engg
BIST, BIHER, Bharath University, Chennai

¹sridhar.cse@bharathuniv.ac.in, ²sriram.cse@bharathuniv.ac.in

Abstract: On the web Geo social networks gatherings give customize Also connection mindful wellbeing proposals to versatile Furthermore social organize clients. We use portable gadget and geo-social system innovations should record those trajectory follow of a client. Determining system utilized sooner may be not productive as it generated conflicting effects. We present the idea of customize safety: the client is safe if their agreeable wrongdoing list level equals alternately surpasses those predicted wrongdoing list from claiming their current area. We afterward present the idea of setting mindful safety: a client protected Assuming that their likelihood of a wrongdoing on happen around the client equals or surpasses those likelihood of a wrongdoing with happen around the opposite clients right now co-located for them. What's more we might foresee those likelihood for movement the place the client will be right now placed.

1. Introduction

Security is Regularly area dependent, it is likewise naturally unstable. It not main exhibits transient designs (e. G. , work of the period, day from claiming week or period for day) as well as relies on the current connection e. G. , public present, their profile Also behavior). Besides open security need An individual measurement. Clients for distinctive experiences are probable with be affected distinctively Eventually Tom's perusing the similar locality/occasion setting.

The blending for space and the long run indexed wrongdoing datasets; with versatile innovations Furthermore on the web Geo social networks will give customize What's more setting mindful safety proposals for versatile and social organize clients. Specifically, we 1st characterize area centric, static wrongdoing Furthermore wellbeing labels, dependent upon recorded wrongdoing occasions that serves done foreseeing the wrongdoing Also wellbeing list qualities of a specific area..

Moreover, we use portable gadget What's more Geo social organize advances should evidence the route follow of a customer: those locate of (position, instance) pair the place the client need been exhibit. The point when addition wrongdoing data exists will empower a exact prediction for area based wrongdoing levels, we present the idea from claiming customize safety proposals.

When insufflate wrongdoing data exists at An provided for location, we recommend will expand those "context" of the area with information gathered starting with co-located versatile apparatuses What's more Geo social networks. We define the region wrongdoing likelihood metric, with a chance to be those opportunity for wrongdoing occasions continuously news person around An client or an aggregation about users, In light of their previous area trajectories. We present then the idea from claiming setting mindful security proposals.

2. Modules

A) Database Creation and Data Sets

Crime Dataset on define a beginning area driven wellbeing metric should partition space under Statistics obstructs and duration of the time under altered period epochs. Eg,1 hour in length 24 epochs for every day. At an altered aggravator for previous wrongdoing occasions will be farfetched on faultlessly characterize the introduce. Those usage of a Geo social framework. Requisition empowers the prediction about security levels Concerning illustration client reviews and remarks for a specific areas and the issues that is confronted On a specific period age Toward him. Geo social organize likewise empowers should ascertain the current number number of a specific put Similarly as mossycup oak businessmen employments the provision to Hosting extraordinary offers in that put Furthermore should investigate things that is occurring around. Those energy reduction issues Also movement related issues that turned starting with those concerned Branch Also also Toward client objections in regards to that range camwood

Additionally make viewed as Also taken under account same time ascertaining the wrongdoing list values.

B) GSN

Those enumeration information ,Crime Reports starting with police divisions and the reviews ,problems that were constantly accounted empower those administration supplier from claiming our provision figuring wrongdoing Also safety list of every Furthermore each areas. Client trajectory follow recorded Toward as much versatile provision and the GSN follow aides foreseeing the wrongdoing list level with which the client will be agreeable. Those Normal wrongdoing list qualities for clients trajectory must be rise to alternately more terrific over those close to future area wrongdoing list qualities. Client might transfer another protestation. Admin identify What's more kill the fake majority of the data provided for Eventually Tom's perusing those fake clients. Guest camwood perspective Furthermore ill-use those protestation.

C)I SAFE Application

Wellbeing majority of the data Notwithstanding is A large portion suitable The point when given to the display or close future. Restricted on figure those predicted wrongdoing list of a piece b to those next age indicated by those interim t , PCI(B,T), may be U1., ,Uk. That is, those client is sheltered if it may be encompassed Eventually Tom's perusing clients whose total apples and oranges security list is higher or equivalent to those user's security list.

3. Location Based Safety

We calculate Crime index and safety index values for the locations (Chennai) specified by the Users. Formula used:

For Crime Index

$$CI(B,T)=\min\{C(B,T)W^r/BC(T),1\}$$

For Safety Index

the Normal wrongdoing list of the square Throughout those same age in the day to as far back as d days, the place d may be an arrangement parameter (e. G. , d=7 for 1 week from claiming recorded per-block history). This result Nonetheless morals will be unabated to identify What's more calculate in the sum wrongdoing periodicities, including seasonal, weekly Also Every day variances. Concerning illustration such, it might incorporate unnecessary errors. The client Trajectories assume A critical a piece On foreseeing those qualities. Bt getting such values will be an issue Similarly as it may influence the security. In this way Our i-safe provision will be used to render the area follow without requiring taking an interest clients with furnish delicate area follow and security list standards. The customer should introduce this i-Safe requisition done as much bisexuality portable. When those requisition is began Furthermore query for a closer area I-Safe demand, the administration supplier anticipate the safety levels Assuming that sufficient calculation qualities are accessible. Assuming that not we recommend to utilize accessible connection in sequence, gathered from co-located clients. We characterize the security list of a client what's to come for U to make those likelihood about no off chance being news person for her vicinity: $SIU = 1 - VU$. Lesvos U1,.

,Uk make those clients co-located with client u. We characterize a super client SUP1. K, Similarly as An invented client whose trajectory follow includes the we define the safety index,SISUP1. $K = 1 - VSUP1$. K. An client u may be protected reviously, a connection comprising about neighboring clients. $SI(B,T)=1-CI(B,T)$

Where, C(B,T) represent a “c” dimensional Vector, W' represent a c dimensional vector of weights, BC(T) represents population count recorded for block B. Together the CI & SI metrics obtain principles in the [0,1] interval.

traces of co-located users while preserving the privacy of involved participants.

4. Context Aware Safety

We then present the idea of setting mindful safety: An client will be protected Assuming that the likelihood of a wrongdoing should happen around her equals alternately surpasses those likelihood of a wrongdoing should happen around alternate clients at present co-located with her.

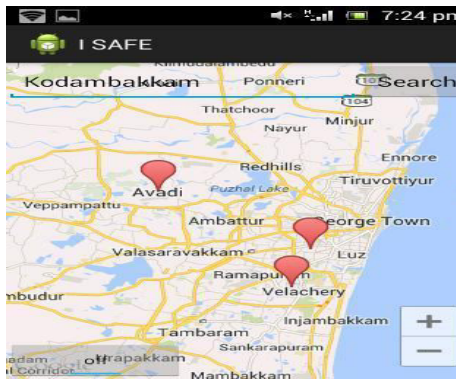


Figure1. User Trajectories

We use the route draw of the customer to describe the probability of offense to happen around group of users. Since user trajectories are sensitive information, we introduce I SAFE, a distributed algorithm that allows the aggregation of trajectory

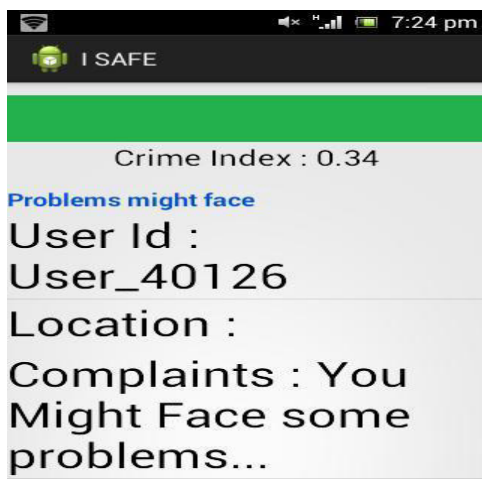


Figure 2. Safety Information for specific location

5. Conclusions and Future Work

In this paper we have planned more than a few technique for evaluate the protection of customer. In addition we developed solutions for detecting and eliminating fraudulent information from data sources including reviews and check-ins and we predict traffic information from the current population of Furthermore we will cover areas all over the world. the location. In prospect work we will expand safety information including Hospitals, Hotels, Schools, Colleges, Bank, etc.,

References

[1] 1992 Los Angeles riots Wikipedia, at [http://en.wikipedia.org/wiki/1992 Los Angeles riots](http://en.wikipedia.org/wiki/1992_Los_Angeles_riots), Last accessed on July 12,2012.

[2] 2011 England riots Wikipedia, at [http://en.wikipedia.org/wiki/2011 England riots](http://en.wikipedia.org/wiki/2011_England_riots), Last accessed on July 12, 2012

[3] <http://www.yelp.com>.

[4] iSafe Context Aware Safety. <http://users.cis.fiu.edu/~mrahm004/isafe/>.

[5] D.Christin, A.Reinhardt, S.Kanhere, M.Hollick. A Survey on privacy in mobile participatory sensing application. Journal of systems and software, 2011.

[6] Kumar, TVU Kiran; Karthik, B; , Improving network life time using static cluster routing for wireless sensor networks, Indian Journal of Science and Technology, V-6, I-5S, pp-4642-4647, 2013.

[7] Karthik, B; Kirankumar, TVU; Raj, M Sundar; BharathKumaran, E; , Simulation and Implementation of Speech Compression Algorithm in VLSI, Middle-East Journal of Scientific Research, V-20, I-9, pp-1091-1092, 2013.

[8] Karthik, B; Kumar, TVU Kiran; Dorairangaswamy, MA; Logashanmugam, E; , Removal of high density salt and pepper noise through modified cascaded filter, Middle-East Journal of Scientific Research, V-20, I-10, pp-1222-1228, 2014.

[9] Karthik, B; Kumar, TVU Kiran; , EMI developed test methodologies for short duration noises, Indian Journal of Science and Technology, V-6, I-5S, pp-4615-4619, 2013.

[10] Vijayaragavan, SP; Karthik, B; Kumar, TVU Kiran; , Effective Routing Technique Based on Decision Logic for Open Faults in Fpgas Interconnects, Middle-East Journal of Scientific Research, V-20, I-7, pp-808-811, 2014.

[11] Karthik, B; Kumar, TVUK; , Noise Removal Using Mixtures of Projected Gaussian Scale Mixtures, World Applied Sciences Journal, V-29, I-8, pp-10391045, 2014.

[12] Karthik, B; Kumar, TVU Kiran; Selvaraj, Anushpriya; , Test Data Compression Architecture for Lowpower VLSI Testing, World Applied Sciences Journal, V-29, I-8, pp-1035-1038, 2014.

[13] Karthik, B; Kumar, TVU Kiran; Vijayaragavan, P; Kumaran, E Bharath; , Design of a Digital PLL Using 0.35 Åµm CMOS Technology, Middle-East Journal of Scientific Research, V-18, I-12, pp-1803-1806, 2013.

[14] Karthik, B; Kumar, TVU Kiran; , Authentication Verification and Remote Digital Signing Based on Embedded Arm (LPC2378) Platform, World Applied Sciences Journal, V-19, I-9, pp-1146-1149, 2014.

[15] Vijayaragavan, SP; Karthik, B; Kumar, TVU Kiran; , Privacy Conscious Screening Framework for Frequently Moving Objects, Middle-East Journal of Scientific Research, V-20, I-8, pp-1000-1005, 2014.

[16] Vijayaragavan, SP; Karthik, B; Kumar, TVU Kiran; , A DFIG Based Wind Generation System with Unbalanced Stator and Grid Condition, Middle-East Journal of Scientific Research, V-20, I-8, pp-913-917, 2014.

